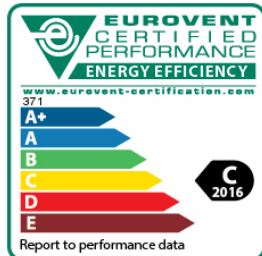


Product range	FLEXLINE	Ecodesign Check 2016 / 2018	No	/	No
Serie	FLNG	specific fan power [W/(m ³ /s)]			4.635
Unit design	Stacked unit	Total weight [kg]			~6.726
type of unit	External unit				
	Supply	Return			
Air flow rate	23.100 [m ³ /h]	21.360 [m ³ /h]			
Model	FLNG 50x80	FLNG 40x80			
External Static Pressure	900 [Pa]	900 [Pa]			
Fan Model / Qty.	RH63C.CR/SM25-B42 / 2x1	RH56C.CR/SM20-B38 / 2x1			
Fan Motor Power / Nominal Rpm	11 [kW] (2x1) / 1466 [1/min]	5.5 [kW] (2x1) / 1455 [1/min]			
Connection to mains	3 ph / 400 V / 50 Hz				
Cross Section Velocity	1,67 [m/s]				
Coil Cross Section Velocity	2 [m/s]				
Heat Recovery Capacity (Winter)	105.04 [kW]				
Heat Recovery Temp. Eff. (EN308)	47,70 [%]				
Heat Recovery Humidity Eff. (EN308)	- [%]				
cooling capacity	138.09 [kW]				
heating capacity	- [kW]				
Total Dimensions (H/W/L)	3234 / 2608 / 8110 [mm]				
Design Winter Outdoor Temperature	-3,00 [°C]				

Energy Efficiency Class



Mechanical Characteristics (EN1886)	
Casing Strength	D1(M)
Thermal Transmittance	T2(M)
Thermal Bridging	TB2(M)
Filter bypass leakage	F9
Casing Air Leakage	L1(M)

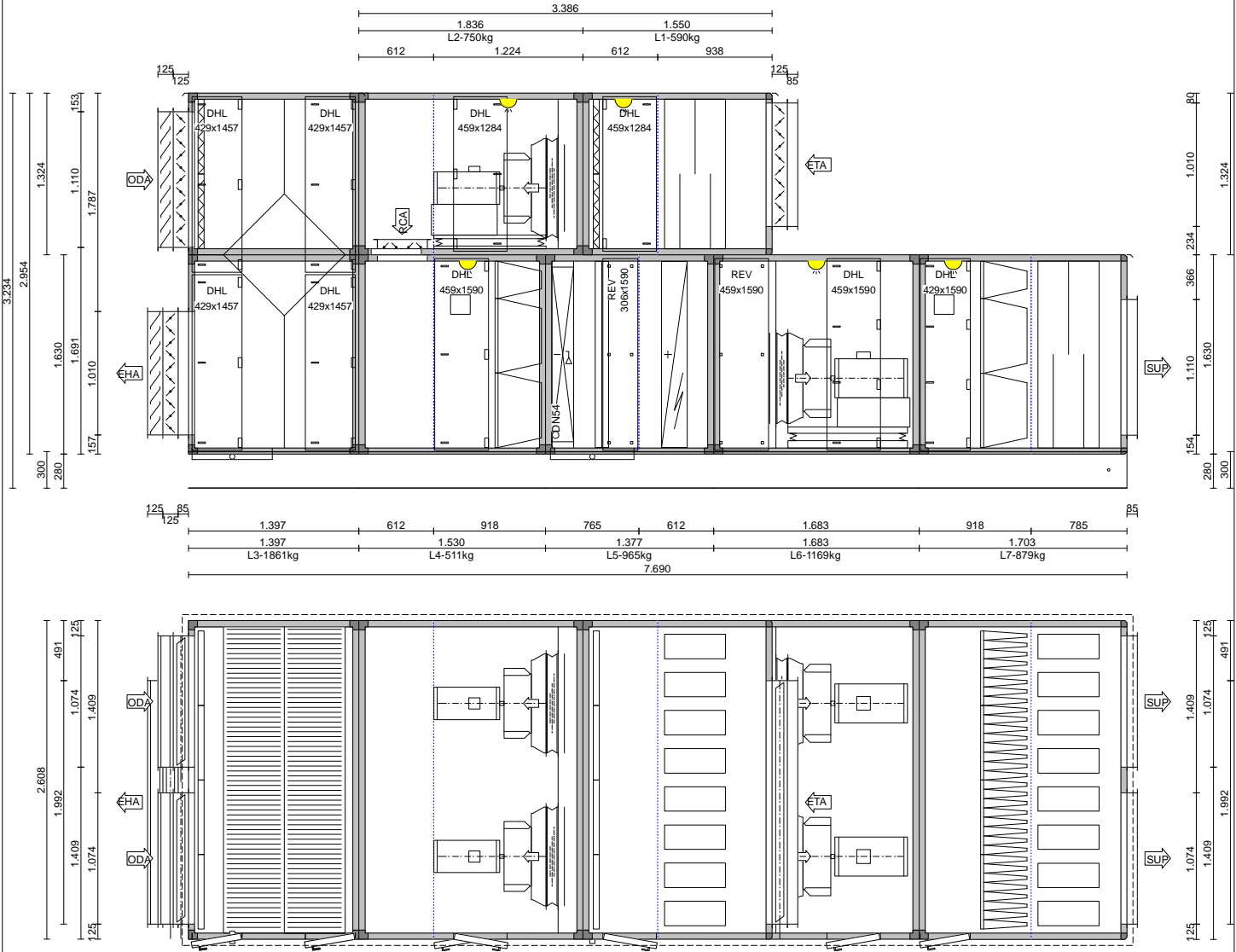
Casing / Frame			
P a n e l		Supply Side	Return Side
	Thickness	50,0 [mm]	50,0 [mm]
	Insulation Type / Density	Rock wool 70kg/m ³	Rock wool 70kg/m ³
	External Sheet Metal	galvanized painted (1,00mm)	galvanized painted (1,00mm)
	Internal Sheet Metal	galvanized steel (0,90mm)	galvanized steel (0,90mm)
	Base Panel Insulation	Rock wool 70kg/m ³	Rock wool 70kg/m ³
	Base Panel Internal Sheet Metal	galvanized steel (0,90mm)	galvanized steel (0,90mm)
Frame Type (Thickness)		galvanized steel (30x30, 2mm)	galvanized steel (30x30, 2mm)

Ecodesign - Check

Non-Residential Ventilation Unit,BVU	2016			2018		
	Check	Value	Limit	Check	Value	Limit
Fan with Variable Speed Drive	Warning	Intended to be use	Mandatory	Warning	Intended to be use	Mandatory
Pressure Gauge for Filters	Approved	none	Not Needed	Failed	none	Mandatory
SFP internal in W/(m³/s)	Failed	778 [W/(m³/s)]	740 [W/(m³/s)]	Failed	778 [W/(m³/s)]	650 [W/(m³/s)]
Heat Recovery	Approved	Cross Flow Plate	Mandatory	Approved	Cross Flow Plate	Mandatory
Thermal Efficiency of Heat Recovery	Failed [%]	47,70 [%]	67 [%]	Failed [%]	47,70 [%]	73 [%]
Thermal By-Pass of Heat Recovery	Failed	none	Mandatory	Failed	none	Mandatory
Total Check	Failed			Failed		

Ecodesign - Technical Data

Manufacturer	Systemair	
Typology	NRVU, BVU	
Model	FLNG 50x80	FLNG 40x80
type of heat recovery system	Cross Flow Plate Heat Exchanger	
Thermal Efficiency of Heat Recovery System (EN 308)	47,70 [%]	
Maximum Internal Leakage Rate (±250 Pa, EN 308)	Less than %3	
Maximum External Leakage Rate	Leakage Class Rate 0,60 l/sm² at +400Pa and 0,47 l/sm² -400Pa	
	Supply	Extract
Air flow rate	23.100 [m³/h]	21.360 [m³/h]
face velocity at design flow rate	1,67 [m/s]	1,93 [m/s]
Absorbed Motor Power For Energy Class, VSD Included	18,120 [kW]	12,230 [kW]
Fan Static Efficiency (1253/2014)	59,78 [%]	66,52 [%]
Static System Efficiency (1253/2014)	59,02 [%]	60,1 [%]
Energy Class for Filters	D	No Classification
Internal Static Pressure Drop of Ventilation Components	280 [Pa]	183 [Pa]
Total Static Pressure Drop at Design Conditions	1718 [Pa]	1273 [Pa]
External Static Pressure Drop	900 [Pa]	900 [Pa]
SFPint, Specific Fan Power at Ecodesign Ref. Config.	474 [W/(m³/s)]	304 [W/(m³/s)]
SFPint tot, Tot. Spec. Fan Pow. at Ecodesign Ref. Config.	778 [W/(m³/s)]	
SFPint, 2016 Limit Value	740 [W/(m³/s)]	
SFPint, 2018 Limit Value	650 [W/(m³/s)]	



Project	Yeditepe Uni Kozmetik Ur	Revision Date	8.10.2020
Unit Reference	AHU-01	Designer	ibrahim Kaygisiz
Airflow Rate [m³/h]	23.100	Model	FLNG 50x80 FLNG 40x80

Plate exchanger - diagonal + filter		Supply air		Section length [mm]	1.397,0	Pressure drop [Pa]		350
Supplier	Recuperator FQ AL 07 N 1254 L 1 AE SM X2			Cooling mode Supply Supply [m³/h] 23.100 Pressure drop [Pa] 223 DB Inlet [°C] 34,00 RH Inlet [%] 48,0 DB Outlet [°C] 28,90 RH Outlet [%] 64,0 Exhaust Exhaust [m³/h] 21.360 Pressure drop [Pa] 189 DB Inlet [°C] 23,00 RH Inlet [%] 50,0 DB Outlet [°C] 28,50 RH Outlet [%] 36,0 Condensing water 0 Temperature efficiency [%] 49,8 (wet) Recovery capacity [kW] 39,19 (dry)				
Pressure drop std. [Pa]	213 (Supply)	185 (Exhaust)						
Velocity [m/s]	4,34 (Supply)	4,01 (Exhaust)						
Temperature efficiency [%]	47,70 (ErP)							
efficiency [%]	44,80 (EN 13053)							
Efficiency class	H6 (EN 13053)							
Heating mode								
Supply								
Flow rate [m³/h]	23.100	Pressure drop [Pa]	198					
DB Inlet [°C]	-3,00	RH Inlet [%]	80,0					
DB Outlet [°C]	10,60	RH Outlet [%]	30,0					
Exhaust								
Flow rate [m³/h]	21.360	Pressure drop [Pa]	183					
DB Inlet [°C]	23,00	RH Inlet [%]	50,0					
DB Outlet [°C]	11,40	RH Outlet [%]	90,0					
Condensing water [kg/h]	30,05							
Temperature efficiency [%]	52,3 (wet)	46,1 (dry)						
Recovery capacity [kW]	105,04	(dry)						
Freezing temperature	0,00 [°C]							
Type	Panel Filter							
Mounting	Dirty air widthdrawal			Filter surface [m²]	4,80			
Efficiency Class (EN 779)	G4			Dimension & Quantity WxHxD & pcs	592,0 x 592,0 x 48,0 - 8			
Initial dP [Pa]	71							
Medium dP	96							
Final dP [Pa]	121							
ISO 16890 Class	Coarse 60%							
Filter Cross Sect. Vel. [m/s]	2,29							
Filter Energy Class	No Classification							
Door with hinge and lever				Dimensions WxH [mm]	429,0 x 1.457,0			
Door with hinge and lever				Dimensions WxH [mm]	429,0 x 1.457,0			
Door with hinge and lever				Dimensions WxH [mm]	429,0 x 1.457,0			
Door with hinge and lever				Dimensions WxH [mm]	429,0 x 1.457,0			
C-connection frame	Material	Aluminium	Type	CF	Dimensions [mm]	1.992,0 x 1.010,0 x 85,0		
flange [mm]	30,0							
Damper:				Dimensions [mm]	1.992,0 x 1.010,0 x 125,0			
Actuated by	ready to actuator	Airflow [m³/h]	23.100	Frame	Aluminium			
Qty. Levers	1	air velocity [m/s]	3,19	Blades	Aluminium			
torque [Nm]	16,430	Pressure drop [Pa]	8	Tightness class	Standard			
Weather louver				Dimensions [mm]	1.992,0 x 1.010,0 x 125,0			
Type	WL	Material	galvanized painted					

Damper:

Dimensions [mm] **1.110,0 x 1.074,0 x 125,0**

Actuated by	ready to actuator	Airflow [m³/h]	11.550	Frame	Aluminium
Qty. Levers	1	air velocity [m/s]	2,69	Blades	Aluminium
torque [Nm]	9,750	Pressure drop [Pa]	6	Tightness class	Standard

Weather louvre

Dimensions [mm] **1.110,0 x 1.074,0 x 125,0**

Type **WL** Material **galvanized painted**

Damper:

Dimensions [mm] **1.110,0 x 1.074,0 x 125,0**

Actuated by	ready to actuator	Airflow [m³/h]	11.550	Frame	Aluminium
Qty. Levers	1	air velocity [m/s]	2,69	Blades	Aluminium
torque [Nm]	9,750	Pressure drop [Pa]	6	Tightness class	Standard

Weather louvre

Dimensions [mm] **1.110,0 x 1.074,0 x 125,0**

Type **WL** Material **galvanized painted**

Drain pan

Quality **stainless steel 304** Drain connection **1 1/4"**

Mixing Section			Supply air	Section length [mm]	612,0	Pressure drop [Pa]	15
Winter			Summer				
	Fresh air	Return air		Fresh air	Return air		
Flow rate [m³/h]	9.240	13.860	Flow rate [m³/h]	9.240	13.860		
Mixing ratio [%]	40	60	Mixing ratio [%]	40	60		
DB inlet [°C]	10,6	23	DB inlet [°C]	28,9	23		
RH inlet [%]	30	50	RH inlet [%]	64	50		
Mixed air			Mixed air				
DB outlet [°C]	18,00		DB outlet [°C]	25,40			
RH outlet [%]	48,6		RH outlet [%]	57,5			

Damper:

Dimensions [mm] **1.099,0 x 410,0 x 125,0**

Actuated by	ready to actuator	Airflow [m³/h]	6.930	Frame	Aluminium
Qty. Levers	1	air velocity [m/s]	4,27	Blades	Aluminium
torque [Nm]	3,630	Pressure drop [Pa]	15	Tightness class	Standard

Damper:

Dimensions [mm] **1.099,0 x 410,0 x 125,0**

Actuated by	ready to actuator	Airflow [m³/h]	6.930	Frame	Aluminium
Qty. Levers	1	air velocity [m/s]	4,27	Blades	Aluminium
torque [Nm]	3,630	Pressure drop [Pa]	15	Tightness class	Standard

Project	Yeditepe Uni Kozmetik Ur	Revision Date	8.10.2020
Unit Reference	AHU-01	Designer	ibrahim Kaygisiz
Airflow Rate [m³/h]	23.100	Model	FLNG 50x80 FLNG 40x80

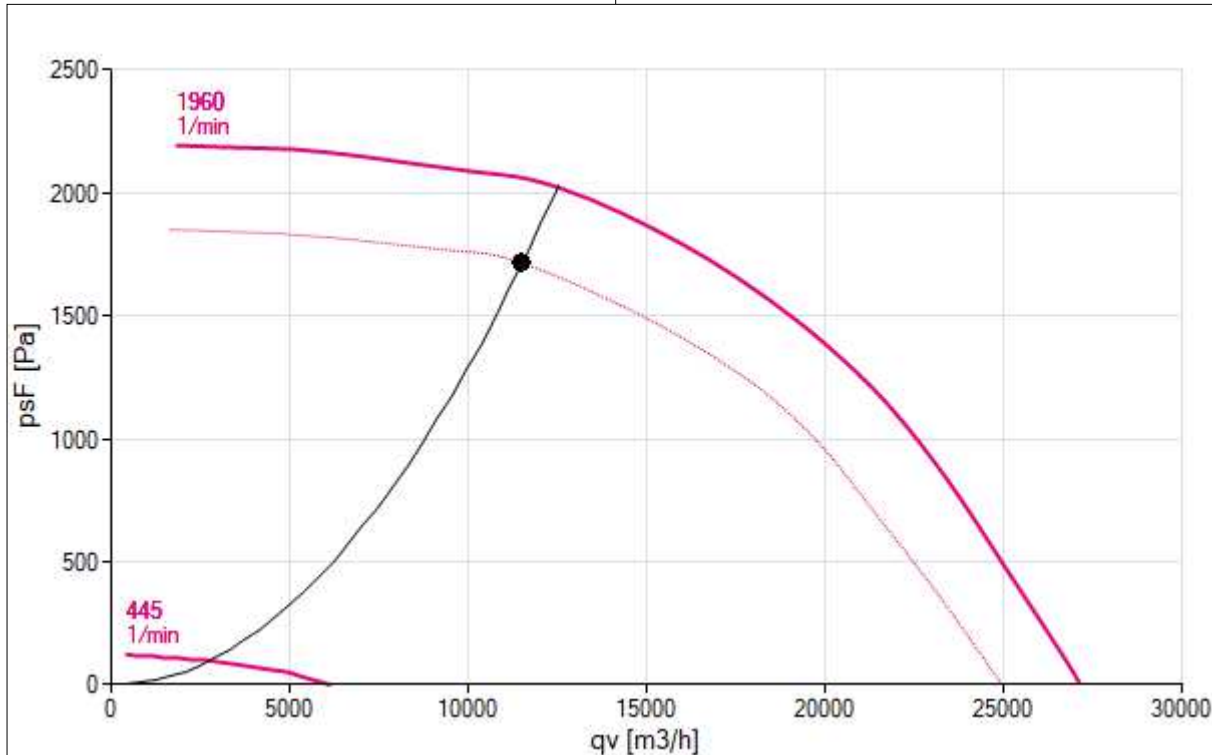
Filter	Supply air	Section length [mm]	918,0	Pressure drop [Pa]	132
Type	Bag Filter				
Mounting	Dirty air withdrawal	Filter surface [m²]	24,24		
Efficiency Class (EN 779)	F7	Dimension & Quantity WxHxD & pcs	592,0 x 592,0 x 380,0 - 8		
Initial dP [Pa]	82		287,0 x 592,0 x 380,0 - 4		
Medium dP	132				
Final dP [Pa]	182				
ISO 16890 Class	ePM1 55%				
Filter Cross Sect. Vel. [m/s]	1,84				
Filter Energy Class	D				
Door with hinge and lever		Dimensions WxH [mm]	459,0 x 1.590,0		
<u>Inspection window</u>	rectangular	Dimensions WxH [mm]	160,0 x 160,0		
<u>Lamp</u>	Lamp - Std				

Cooling coil	Supply air	Section length [mm]	765,0	Pressure drop [Pa]	71
Evaporating coil	Air Side	Fluid Side			
Flow Rate [m³/h]	23.100	Fluid	R410A		
Velocity on Coil [m/s]	2,00	Evaporation Temp. [°C]	7,00		
DB Inlet [°C]	25,40	Overheating [°C]	5,00		
DB Outlet [°C]	14,00	Condensing temp. [°C]	46,00		
total capacity [kW]	138,09	Pressure drop [kPa]	48,3		
sensible capacity [kW]	88,34	Flow Rate [kg/s]	0,836		
Pressure drop [Pa]	60 / 51 (wet/dry)				
Heating mode	Air Side	Fluid Side			
DB Inlet [°C]	18,00	Pressure drop [kPa]	8		
DB Outlet [°C]	29,18	Flow Rate [kg/s]	0,428		
Capacity [kW]	86,70				
Coil Code	F 32x28-12 C S 45T 4R 2240A 2.1P 22NC (.12/.5)	Materials:			
Row No.	4	Fins	Aluminium (0,120 mm)		
Nos. of Refr. Circuits	1 circuit	Tubes	copper (0,500 mm)		
Circuit No.	22	Header	copper		
fin spacing [mm]	2,10	Frames	galvanized steel		
Inner Volume [lt]	46,580	Fin protection	-		
Finned Area [m²]	307,05				
Tube No.	45				
Finned Width [mm]	2.240,0				
Connection Qty / Dia [mm]	1 / 54				
Revision panel with turn bolt		Dimensions WxH [mm]	306,0 x 1.590,0		
<u>Drain pan</u>	Quality	stainless steel 304	Drain connection	1 1/4"	
<u>Drop eliminator</u>	Brand	Rehau	Frame Aluminium	Fins	PPTV 11 Pa

Project	Yeditepe Uni Kozmetik Ur	Revision Date	8.10.2020
Unit Reference	AHU-01	Designer	ibrahim Kaygisiz
Airflow Rate [m³/h]	23.100	Model	FLNG 50x80 FLNG 40x80

Electric heater		Supply air	Section length [mm]	612,0	Pressure drop [Pa]	1
Air Side			Heater Properties			
Flow Rate [m³/h]	23.100		"Std_EI_Heat/VRA-FU-2503-1525-210 - 12.7 + 12.7 + 12.7 kW - 3x400V-M-A-I			
total capacity [kW]	38,00		Stages	3		
Pressure drop [Pa]	1		Bars	STST		
DB Inlet [°C]	14,00	RH Inlet [%]	Frame	AL		
DB Outlet [°C]	18,54	RH Outlet [%]	Connection Data	3x400 V		

Plug fan		Supply air		Section length [mm]		1.683,0		Pressure drop [Pa]	
Fan data					Motor data				
Air flow rate [m³/h]		23.100							
Type		Plug			Model Brand			Standard	
Supplier / Model / Quantity in WxH		ZA-RH63C.CR/SM25-B42-367274 / 2x1			Model / Quantity in WxH			Std-IE3-50-160-4-11 / 2x1	
					Rated Power [kW]			11,000 x (2x1)	
Internal Static Pressure Drop [Pa]		796			nominal RPM [1/min]			1.466	
External Static Pressure Drop [Pa]		900			Phase / Voltage / Frequency			3x400 V / 50 Hz	
Fan Installation Pressure Drop [Pa]		22			Efficiency Class			IE3	
total static pressure drop [Pa]		1.718			Motor Full Load Efficiency [%]			91,4	
Dynamic Pressure of Fan [Pa]		44			Rated Current [A]			21,20	
Total Pressure of Fan [Pa]		1.762			Protection / Ins. & Temp. Class			IP55/ F	
Frequency Operation / Max [Hz]		61,6 / 67			Exproof Motor (Yes/No)			No	
Fan Rpm Operation / Max [1/min]		1.805 / 1.960			Tot. Abs. power,excluding VSD [kW]			17,8868	
shaft power [kW]		8,010			Tot. Abs. power,including VSD [kW]			18,440	
Impeller Efficiency Static/Total [%]		68,8 / 70,6							
Overall Efficiency [%]		70,2							
K-factor (p=1.2 kg/m³)		295							
SoundPowerLevel Intake/Outlet		86,8 / 93,4 db(A)			AV Isolator Info			Spring AV Isolator	
Spark-Proof Fan (Yes/No)		No							
Fan octave band sound power level (Lokt)									
Okt. Frq. Hz	125	250	500	1000	2000	4000	8000		
Inlet	87,0	87,0	78,0	81,0	81,0	77,0	72,0		
Outlet	90,0	91,0	90,0	89,0	86,0	81,0	74,0		
sound power level [dB (A)]		93,3							
Sound power [dB]		97,0							



Project	Yeditepe Uni Kozmetik Ur	Revision Date	8.10.2020
Unit Reference	AHU-01	Designer	ibrahim Kaygisiz
Airflow Rate [m³/h]	23.100	Model	FLNG 50x80 FLNG 40x80

Revision panel with turn bolt	Dimensions WxH [mm]	459,0 x 1.590,0
Door with hinge and lever	Dimensions WxH [mm]	459,0 x 1.590,0
Opening L	Dimensions WxH [mm]	740,0 x 740,0
Opening L	Dimensions WxH [mm]	740,0 x 740,0
<u>Lamp</u> Lamp - Std		
1 Pcs Safety Switch		

Filter	Supply air	Section length [mm]	918,0	Pressure drop [Pa]	214
Type	Bag Filter				
Mounting	Dirty air withdrawal	Filter surface [m²]	24,24		
Efficiency Class (EN 779)	F9	Dimension & Quantity WxHxD & pcs	592,0 x 592,0 x 380,0 - 8		
Initial dP [Pa]	164		287,0 x 592,0 x 380,0 - 4		
Medium dP	214				
Final dP [Pa]	264				
ISO 16890 Class	ePM1 85%				
Filter Cross Sect. Vel. [m/s]	1,84				
Filter Energy Class	D				
Door with hinge and lever	Dimensions WxH [mm]	429,0 x 1.590,0			
<u>Inspection window</u> rectangular	Dimensions WxH [mm]	160,0 x 160,0			
<u>Lamp</u> Lamp - Std					

Sound attenuator	Supply air	Section length [mm]	785,0	Pressure drop [Pa]	13
Splitter Type S1 - 200x8x1530x500		Selected Attenuator Info			
Air volume [m³/h] 23.100		Fqr [Hz]	125 250 500 1000 2000 4000 8000 Sum db(A)		
Splitter frame GI		Abs [dB]	6,0 18,0 30,0 33,0 31,0 25,0 24,0		
Pressure drop [Pa] 13					
Splitter length 1 [mm] 500,0					
Number of splitters 8					
<u>C-connection frame</u> flange [mm] 30,0	Material Aluminium Type CF	Dimensions [mm]	1.110,0 x 1.074,0 x 85,0		
<u>C-connection frame</u> flange [mm] 30,0	Material Aluminium Type CF	Dimensions [mm]	1.110,0 x 1.074,0 x 85,0		

noise calculation

sound power [dB]

Frq. Hz	125	250	500	1000	2000	4000	8000	Sum [dB(A)]
Inlet	85,0	83,0	71,0	71,0	66,0	59,0	54,0	77,8
Outlet	85,0	73,0	58,0	52,0	50,0	49,0	43,0	70,7
Casing	75,0	68,0	61,0	59,0	56,0	48,0	33,0	67,8

sound pressure level [dB]

Frq. Hz	125	250	500	1000	2000	4000	8000	Sum [dB(A)]	measuring point at	3 m	Distance
Casing	57,5	50,5	43,5	41,5	38,5	30,5	15,5	50,3			

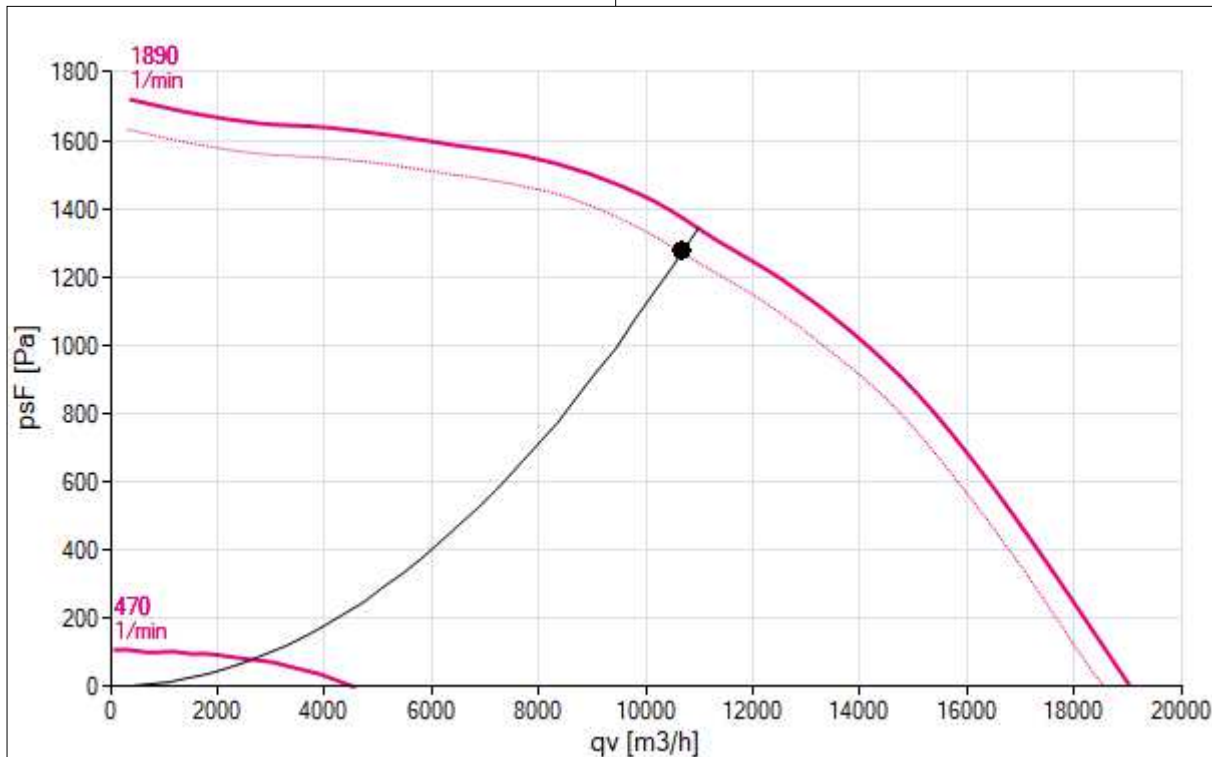
Tolerance +/- 3 dB

Exhaust air

Sound attenuator			Exhaust air		Section length [mm]				938,0		Pressure drop [Pa]				24								
Splitter Type			S1 - 200x8x1224x500			Selected Attenuator Info																	
Air volume [m³/h]			21.360			Fqr [Hz]		125		250		500		1000		2000		4000		8000		Sum db(A)	
Splitter frame			GI			Abs [dB]		6,0		18,0		30,0		33,0		31,0		25,0		24,0			
Pressure drop [Pa]			17																				
Splitter length 1 [mm]			500,0																				
Number of splitters			8																				
<u>Damper:</u>						Dimensions [mm]				1.992,0 x 1.010,0 x 125,0													
Actuated by		ready to actuator		Airflow [m³/h]		21.360		Frame		Aluminium													
Qty. Levers		1		air velocity [m/s]		2,95		Blades		Aluminium													
torque [Nm]		16,430		Pressure drop [Pa]		7		Tightness class		Standard													
<u>C-connection frame</u>		Material		Aluminium		Type		CF		Dimensions [mm]				1.992,0 x 1.010,0 x 85,0									
flange [mm]		30,0																					

Filter	Exhaust air	Section length [mm]	612,0	Pressure drop [Pa]	89
Type	Panel Filter				
Mounting	Dirty air withdrawal	Filter surface [m²]	4,80		
Efficiency Class (EN 779)	G4	Dimension & Quantity WxHxD & pcs	592,0 x 592,0 x 48,0 - 8		
Initial dP [Pa]	64				
Medium dP	89				
Final dP [Pa]	114				
ISO 16890 Class	Coarse 60%				
Filter Cross Sect. Vel. [m/s]	2,12				
Filter Energy Class	No Classification				
Door with hinge and lever		Dimensions WxH [mm]		459,0 x 1.284,0	
Lamp	Lamp - Std				

Plug fan		Exhaust air		Section length [mm]		1.224,0		Pressure drop [Pa]	
Fan data					Motor data				
Air flow rate [m³/h]		21.360							
Type		Plug			Model Brand			Standard	
Supplier / Model / Quantity in WxH		ZA-RH56C.CR/SM20-B38-362540 / 2x1			Model / Quantity in WxH			Std-IE3-50-132-4-5.5 / 2x1	
					Rated Power [kW]			5,500 x (2x1)	
Internal Static Pressure Drop [Pa]		344			nominal RPM [1/min]			1.455	
External Static Pressure Drop [Pa]		900			Phase / Voltage / Frequency			3x400 V / 50 Hz	
Fan Installation Pressure Drop [Pa]		30			Efficiency Class			IE3	
total static pressure drop [Pa]		1.273			Motor Full Load Efficiency [%]			89,6	
Dynamic Pressure of Fan [Pa]		59			Rated Current [A]			11,00	
Total Pressure of Fan [Pa]		1.332			Protection / Ins. & Temp. Class			IP55/ F	
Frequency Operation / Max [Hz]		63,1 / 65			Exproof Motor (Yes/No)			No	
Fan Rpm Operation / Max [1/min]		1.837 / 1.890			Tot. Abs. power,excluding VSD [kW]			11,9116	
shaft power [kW]		5,230			Tot. Abs. power,including VSD [kW]			12,280	
Impeller Efficiency Static/Total [%]		72,3 / 75,6							
Overall Efficiency [%]		68,9							
K-factor (p=1.2 kg/m³)		238							
SoundPowerLevel Intake/Outlet		82,2 / 90,3 db(A)			AV Isolator Info			Spring AV Isolator	
Spark-Proof Fan (Yes/No)		No							
Fan octave band sound power level (Lokt)									
Okt. Frq. Hz	125	250	500	1000	2000	4000	8000		
Inlet	75,0	85,0	77,0	76,0	74,0	71,0	70,0		
Outlet	82,0	91,0	88,0	86,0	80,0	76,0	73,0		
sound power level [dB (A)]		90,0							
Sound power [dB]		94,0							



Door with hinge and lever	Dimensions WxH [mm]	459,0 x 1.284,0
Opening L	Dimensions WxH [mm]	810,0 x 710,0
Opening L	Dimensions WxH [mm]	810,0 x 710,0
<u>Lamp</u> Lamp - Std		
1 Pcs Safety Switch		

Mixing Section	Exhaust air	Section length [mm]	612,0	Pressure drop [Pa]	
Plate exchanger - diagonal + filter	Exhaust air	Section length [mm]	1.397,0	Pressure drop [Pa]	350

noise calculation									
sound power [dB]									
Frq. Hz	125	250	500	1000	2000	4000	8000	Sum [dB(A)]	
Inlet	71,0	69,0	49,1	45,1	44,1	47,0	47,0	62,1	
Outlet	83,0	91,0	88,0	86,0	76,0	71,0	68,0	89,8	
Casing	67,0	68,0	59,0	56,0	50,0	43,0	32,0	63,8	
sound pressure level [dB]									
Frq. Hz	125	250	500	1000	2000	4000	8000	Sum [dB(A)]	measuring point at 3 m Distance
Casing	49,5	50,5	41,5	38,5	32,5	25,5	14,5	46,3	
Tollerance +/- 3 dB									

<u>Baseframe</u>	BASE	Material	galvanized painted	isolated	No
Hole for crane [mm]	20,0	Height [mm]	300,0	Welded	No
1 set roof					
1 set AHUPalet					

<u>Delivery sections</u>	no.	Length	Width	Height	Weight
	1	1.550,0	2.608,0	1.324,0	590,00
	2	1.836,0	2.608,0	1.324,0	750,00
	3	1.397,0	2.608,0	2.954,0	1.861,00
	4	1.530,0	2.608,0	1.630,0	511,00
	5	1.377,0	2.608,0	1.630,0	965,00
	6	1.683,0	2.608,0	1.630,0	1.169,00
	7	1.703,0	2.608,0	1.630,0	879,00

Automation Options (MSR Control)

Mixing Control Scenario Methods

CO2 Based Scenario

Dehumidify Control Options

Smoke Sensor Options

Frequency Invertor Model Selection

FC101

AHU Kit Options

Display Options

Panel Mount External Display

Room Sensors Selections

Automation Part List (MSR Part List)

1	Pcs	High Temperature Thermostat - 1st Electrical Heater	-
1	Pcs	Panel Filter Differential Pressure Switch	-
1	Pcs	Bag Filter Differential Pressure Switch	-
1	Pcs	Bag Filter Differential Pressure Switch	-
1	Pcs	Panel filter Differential Pressure Switch	-
2	Pcs	Damper Actuator Proportional 10nM Spring Return - Outdoor	-
1	Pcs	Damper Actuator Proportional 20nM Spring Return - Exhaust	-
1	Pcs	Damper Actuator Proportional 20nM Spring Return - Extract	-
2	Pcs	Damper Actuator Proportional 4nM Spring Return - Mixing	-
1	Pcs	Exocompact Controller - PLC	-
1	Pcs	Panel Mount display External display, IP65	-
1	Pcs	Door Switch - Supply	-
1	Pcs	Door Switch - Exhaust	-
2	Pcs	Temperature Sensor	-
1	Pcs	Co2 and Temperature Sensor	-
1	Pcs	Pressure Sensor - Supply Fan	-
1	Pcs	Pressure Sensor - Exhaust Fan	-
		Control Panel - A	-
2	Pcs	Frequency Invertor - Supply Fan	-
2	Pcs	Frequency Invertor - Exhaust Fan	-